

## LOCATIONS

### *Suwanee*

505 Peachtree Industrial Blvd.  
770-945-8300

### *Milton*

2905 Bethany Bend  
678-889-4700

### *Buckhead*

3438 Peachtree Road, Ste. 150  
678-889-4540

Hours: M-F 9am-5pm (Buckhead to 4pm)

Drive-thru: M-F 8:30am-5pm  
(No drive-thru in Buckhead)

Saturday: 9am-noon (Suwanee drive-thru only)

## Why Choose us?

All Quantum National Bank Personal Checking Accounts feature:

- \*Visa Debit/Credit Card (subject to approval)
- \*On-line banking and bill pay
- \*Worldwide ATM access with up to \$20/month access fees reimbursed (some restrictions apply, see us for details)
- \*Telephone banking
- \*Account information that can be downloaded into Quicken and Microsoft Money

Other services available to our customers include:

- \*Notary services
- \*Wire transfers
- \*Night depository

[quantumbank.com](http://quantumbank.com)

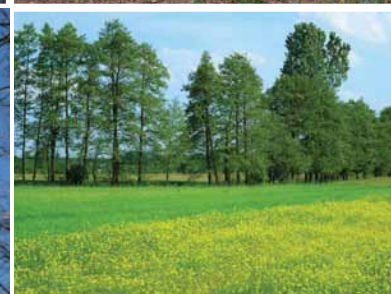
Some photos courtesy of City of Suwanee.  
Effective 1/4/17

Subject to change without notice.

We reserve the right to correct any inadvertent errors and/or omissions upon discovery.



# SWITCH KIT



## EVERYTHING YOU NEED TO KNOW TO MOVE YOUR ACCOUNTS TO QUANTUM



**QUANTUM**<sup>SM</sup>  
NATIONAL BANK  
*Your Banking Partner for Success*